

Photography Instructions and Helpful Hints

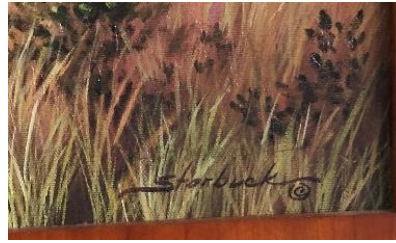
Appraisal cannot be completed without in focus photographs which are free of glare and that clearly show the image. Please take your time and follow these simple instructions.

Submit a photo of the front and back of the entire painting, including the frame (if any). The image must be square, taken head-on, not from the side. Also submit a closeup of the signature and a photo of each of the four quadrants of the painting. (If the back is covered by paper, remove the paper before you photograph it.)

Minimum of 7 Images Required for an Appraisal (*take additional photos of everything of interest*)



Full front with frame



Closeup of Signature



Full Back with Frame



Closeup of the four quadrants of the painting

HELPFUL HINTS

- **Relocate:** You will most likely need to move the painting to photograph it correctly.
- **Natural Light:** Take photographs outside rather than use a flash indoors. A flash almost always has glare.
- **Direct sunlight** is too strong, bright morning light works best.
- **Lay Flat:** It is easier to place the painting flat on the ground and to shoot down over it than to photograph it on the wall.
- **Don't Rush:** Take your time. If the photographs are not clear, we cannot appraise the painting.

EMAIL: COMPLETED FORM ∞ ANY DOCUMENTATION ∞ THE SEVEN (7) REQUIRED IMAGES.

(Attach images as JPEGS of at least 1 MG each – larger files are better)

EMAIL TO: Kathleen@FloridaArtAppraisals.com.

We will invoice you via email for payment prior to receiving your completed appraisal. We accept credit cards, Paypal and Venmo. For questions regarding the appraisal process, please email: Kathleen@FloridaArtAppraisals.com or call 772-519-9019 for assistance.